

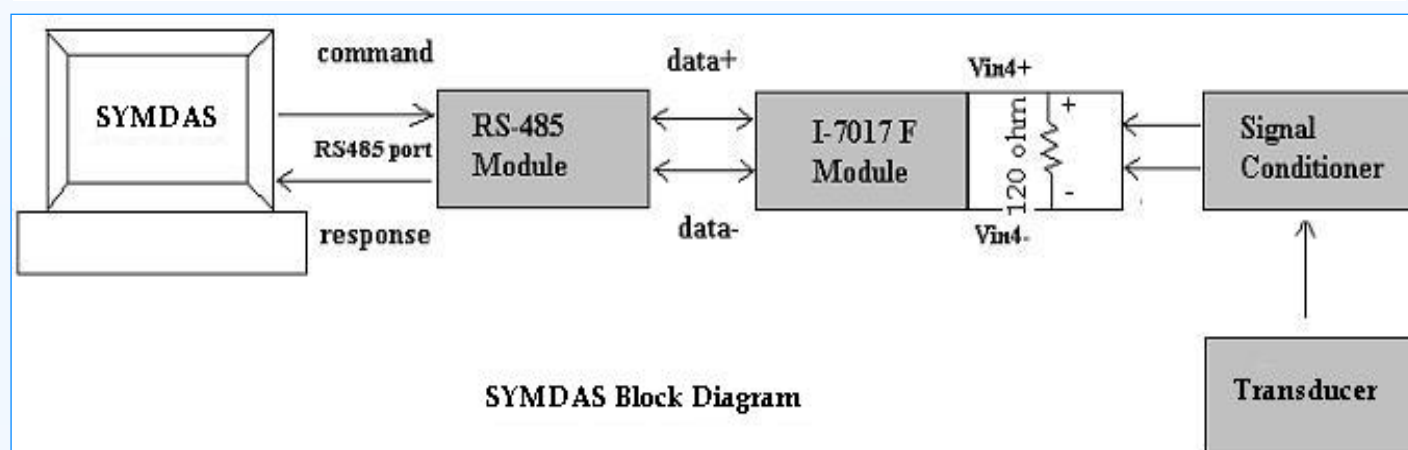
An ISO 9001:2000 Certified Company

SYMDAS is a Data Acquisition Unit which is a total turnkey solution for a system to check the parameter drop levels and to monitor the Parameter values in the standard Engineering Units

The software sends a standard command continuously and receives the response continuously from I-7017F module through RS-485 port. The response received from the DAQ module is the current in mA which has been connected to 4th channel as an input from signal conditioner.

The user as an ADMIN will only be having the entire control over the graph values and others are restricted from modifying the values.

Historical playback - provides for viewing GUI displays presenting historical data rather than real-time data for analysis.



Features:

- Configuration of Parameters
- Perform Online and Post processing of the acquired data's
- Visual status indicator
- Subsystem MIMIC Display
- Measurement Value Display.
- Efficient timing and synchronization of data's
- Recording of Online data's
- Playback of Stored data's
- TCP/IP communication
- Full-featured user analyzable developed software for logging the data.
- Shorter Commissioning time

Specifications:

Hardware

- Construction: Heavy Duty Metal
- Form Factor: ATX, MicroATX, Mini ITX Motherboard
- Display: 61/2 inch LCD Display

Environment:

- Operating Temperature: 0 to 50 deg C
- Humidity: 10% to 90%

Enclosures:

- Color: Black
- Weight (Net/Gross): 10.4 Kg/ 15 Kg
- Dimensions: 480 mm x 431 mm x 133 mm
- Mounting: Rack Mount

I-7017F module:

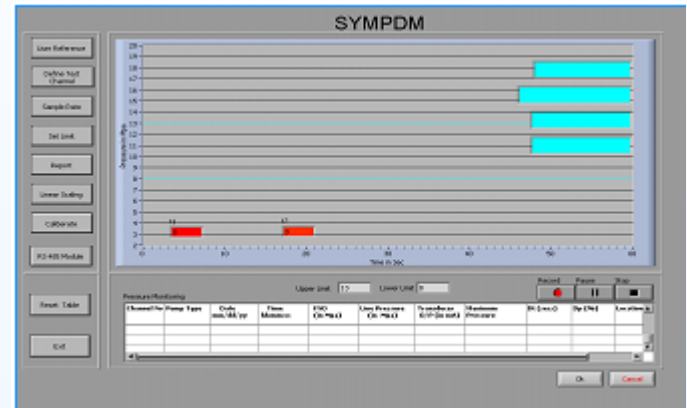
- 8 channel analog input module.
- High speed analog input function.
- 6 differential and 2 single-ended by jumper select.
- Analog input type- mV, V, mA (with external 120 ohm resistor)
- Fast mode sampling rate - 75 samples per second
- Fast mode bandwidth - 78.7 Hz
- Fast mode accuracy - $\pm 0.5\%$
- Input impedance :20M Ohms
- Over voltage Protection- ± 35 V
- Isolation - 3000VDC
- Input power supply- +10 to +30VDC
- Consumption - 1.3W

Dual/Quad Port RS485 PCI Card:

- Flexible baud rates from 57 b/s to 1 Mb/s
- Up to 128 B transmit and receive FIFO
- Full multiprocessor and hyper threading support

- Memory mapped to prevent I/O resource conflicts
- Works with 3.3 and 5 V PCI slots
- O/S support Windows /2000/NT/XP/Me/9x
- Form Factor: Plug-in card
- Interface (Bus) Type: PCI

Software



- SYMDAS is available as a software package having features like Start up and stop the system, Alarm Indication, Tagged Events, Trends utility and controlling the Electrical Solenoid Valves.
- Abstract high-level programming language
- Task-oriented
- The configuration is stored in form of source text
- Reduced complexity
- Universal operating system and hardware interface, i.e. The OS and hardware is independent of application
- Targeted to widely used standard components
- Integrated monitor program for selective feeding and Enquiry of information
- Changes and upgrades of the software and the operating parameters can be effected directly via modem and without expensive assignments on site

- All product names used in this catalog are the registered trademarks of the company
- All information's contained in this catalog is subject to change without notice

Ordering Information

1. SYMDAS_RACK	19" Rack Mountable Industrial PC
2. SYMDAS_7017	Analog Input Interface Card
3. SYMDAS_AMP	Signal Input Box with inbuilt Amp.
2. SYMDAS_CBL	Cables and Accessories
3. SYMDAS_SOFT	Software